

Sheet	Index
2	Purlins & Rails - Standard Order Sheet
3	Purlins & Rails Standard - Example Sheet
4	Eaves Beam
5	Inwardly Lipped Channel Section
6	Cleader Rail Angle
7	Standard Sleeves
8	Heavy End Bay Sleeves
9	Standard sleeves: Channels
10	Accessories
11	Side Rail Supports & Diagonal Tie Wires
12	Eaves Struts
13	Standard Cleats
14	Fire Restraint Side Rail - Standard Information Sheet
15	Fire Restraint Side Rail - Standard Order Sheet
16	Apex Strut Angle Type
17	Channel Joint Rail
18	Cladding Joint Rail
19	CJR/Trimmer Cleats
20	Sigma Purlin
21	Sigma Purlins Sleeves
22	Sigma Purlins Accessories
23	Eaves Struts to Sigma Purlins
24	Standard Cleats for Sigma Purlin
25	Apex Strut Angle Type for Sigma Purlins
26	65mm Centres SWC Cleats
27	115mm Centres SWC Cleats
28	Inset Cleat Details

West Bromwich, England

Albion Road, West Bromwich,
West Midlands B70 8BD.

t: 0121-553 1877 f: 0121 553 5507

Lisburn, Northern Ireland

Unit 1, 3 Rathdown Road, Lissue Industrial Estate,
Lisburn, Co. Antrim, BT28 2RE

t: +0035 3872 489 329 f: 02892 622 966

sales@albionsections.co.uk

www.albionsections.co.uk

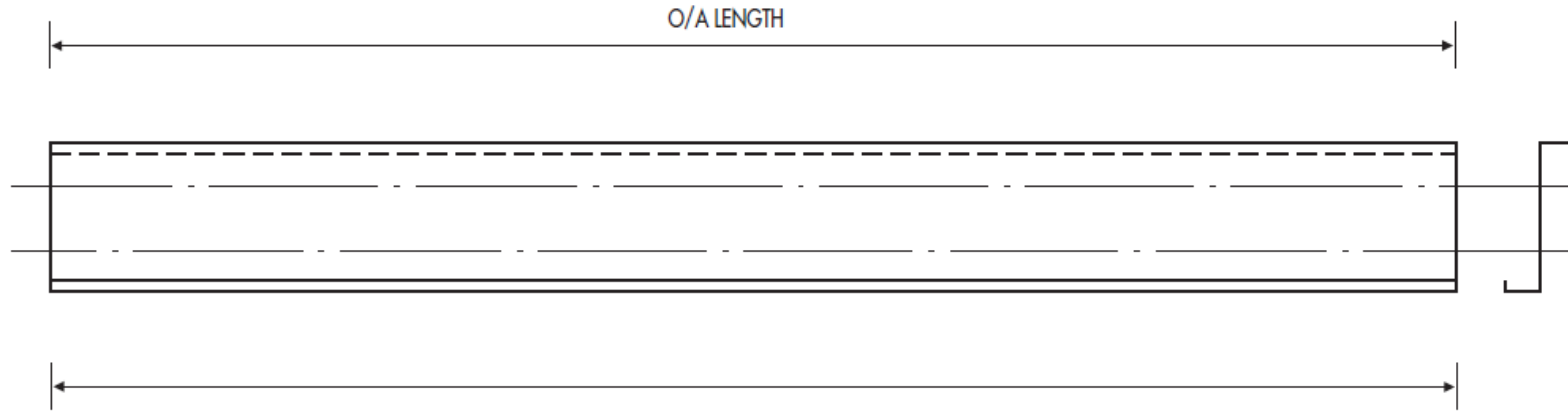
raising your expectations

Standard Order Sheet Purlins & Rails



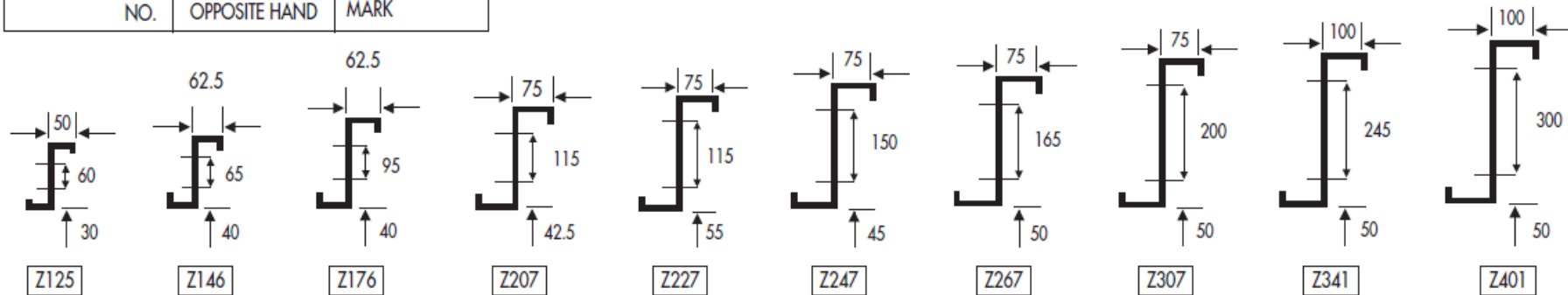
ASL Ref:

www.albionsections.co.uk
sales@albionsections.co.uk



NO.	AS DRAWN	MARK
NO.	OPPOSITE HAND	MARK

SECTION NUMBER REFERENCE



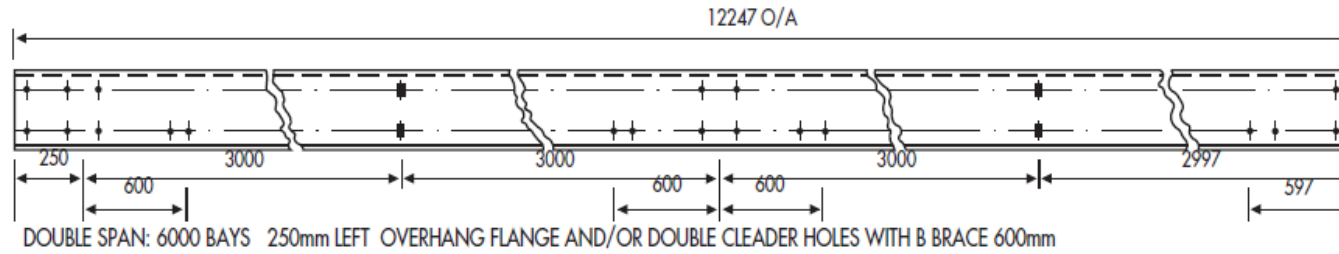
Company		Drawn by	Drawing No.	Revision No.	
Company Order No.	Contract No.	Date			

Standard Example Sheet Purlins & Rails



ASL Ref:

www.albionsections.co.uk
sales@albionsections.co.uk



STANDARD PIERCING OPTIONS

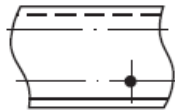
MINIMUM EDGE DISTANCE 29mm. ALL HOLES 18mm DIA. U.N.O.

ALL BELOW DIMENSIONS TO C/L HOLE

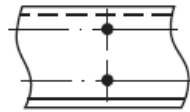
STD GRID LINES



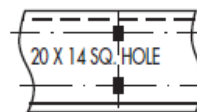
STD END HEAVY END BAY



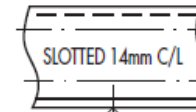
SINGLE HOLE



DOUBLE HOLES



SAG BAR & RAIL SUPPORT HOLES



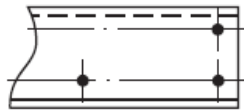
FLANGE HOLE BOTTOM FLANGE ONLY

ALL BELOW DIMENSIONS TO C/L CLEAT

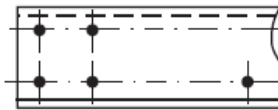
STD GRID LINES



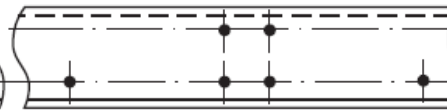
STD END. NO DIM'S NECESSARY



STD END. NO DIM'S NECESSARY



LEFT HAND OVERHANG



MID SPAN HOLES



RIGHT HAND OVERHANG

ALL FIXING HOLES ARE 18mm DIAMETER FOR 16mm DIAMETER BOLTS. ALL 18mm DIAMETER HOLES ARE PUNCHED EITHER IN PAIRS OR ON BOTTOM ONLY OF STANDARD GAUGE LINES. CLEARANCE BETWEEN PURLINS AND RAILS AT JOINTS IS 6mm.

ALL SAG ROD AND RAIL SUPPORT HOLES ARE RECTANGULAR 20mm X 14mm. FLANGE HOLES 14mm DIA AT 33 BMK.

NOTE. SAG ROD HOLES PURLINS AT MID OR $\frac{3}{8}$ & $\frac{5}{8}$ SPAN AS REQUIRED RAILS AT MID OR THIRD POINTS AS REQUIRED



Standard Order Sheet

Eaves Beam

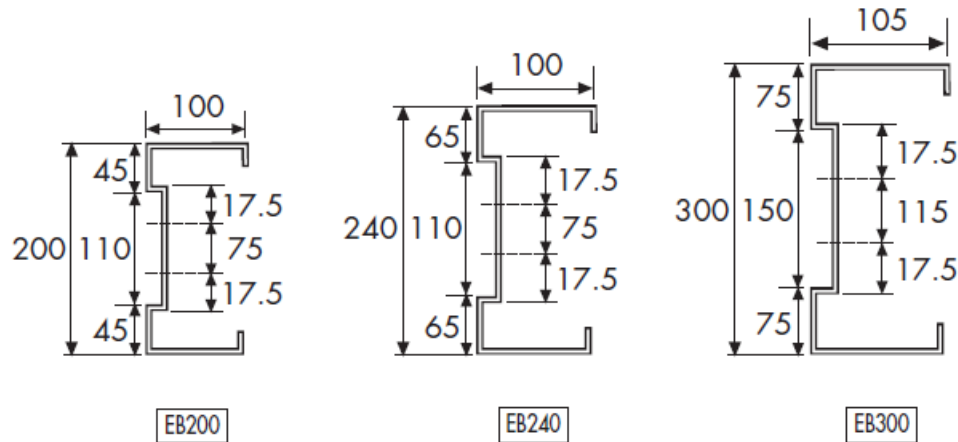
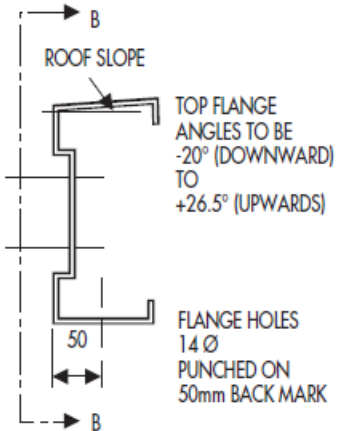
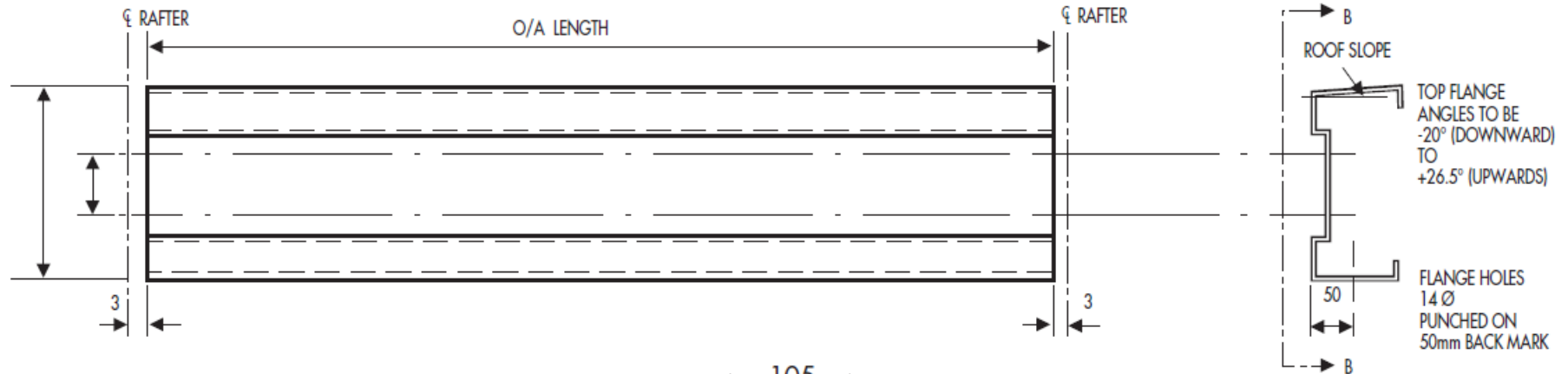


ASL Ref:

www.albionsections.co.uk
sales@albionsections.co.uk

STD WEB HOLES 18mm DIA ON GAUGE LINES
FLANGE HOLES 14mm DIA

VIEW ON BB



SECTION NUMBER REFERENCE	TOP FLANGE ANGLE -10° TO +26.5°
--------------------------	------------------------------------

NO.	AS DRAWN	MARK
NO.	OPPOSITE HAND	MARK

Company		Drawn by	Drawing No.	Revision No.
Company Order No.	Contract No.	Date		

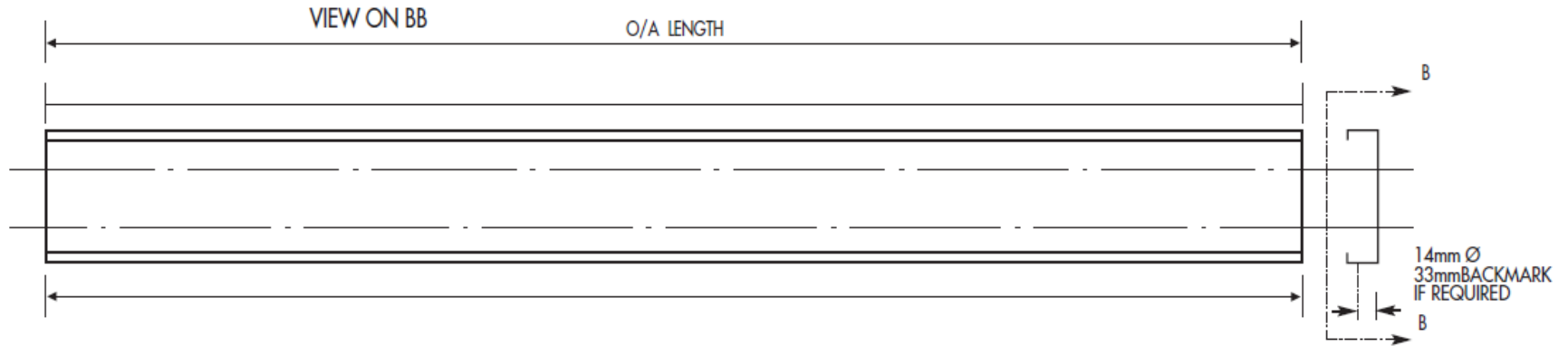


Standard Order Sheet Inwardly Lipped Channel Sections



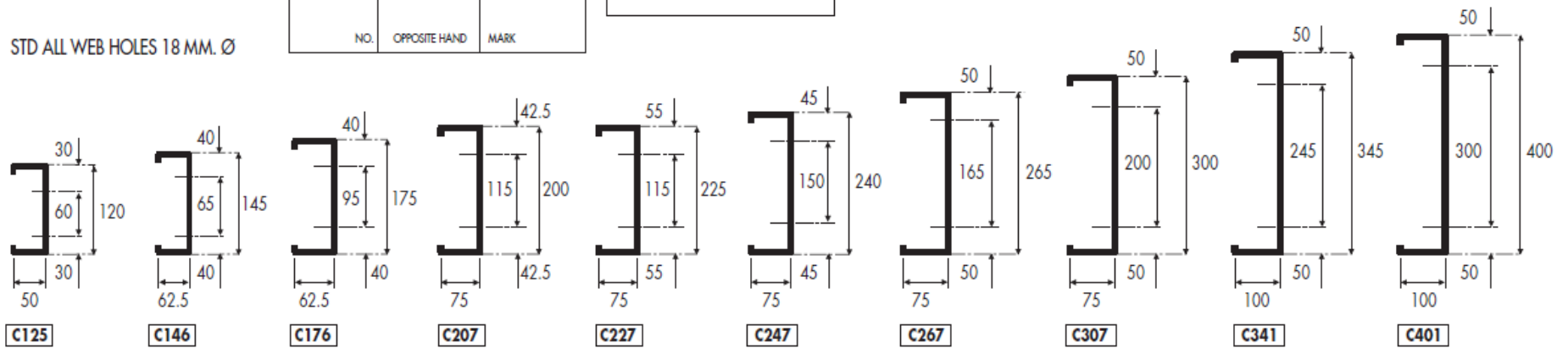
ASL Ref:

www.albionsections.co.uk
sales@albionsections.co.uk



STD ALL WEB HOLES 18 MM. Ø

SECTION NUMBER REFERENCE		
NO.	AS DRAWN	MARK
NO.	OPPOSITE HAND	MARK



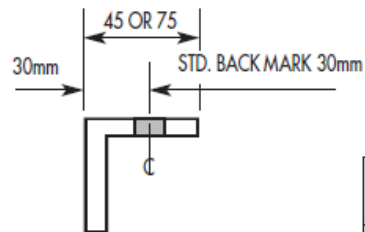
Company		Drawn by	Drawing No.	Revision No.
Company Order No.	Contract No.	Date		

Standard Order Sheet Cleader Rail Angle

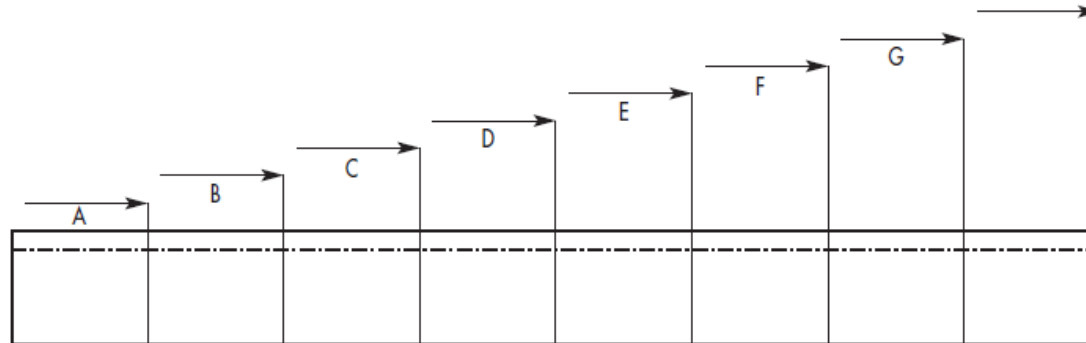


www.albionsections.co.uk
sales@albionsections.co.uk

DELETE WHERE APPLICABLE
45 X 45 X 2.0
75 X 75 X 2.0



ALL HOLES 14mm Ø DIAMETER
FINISH: GALVANISED



NO. OFF	MK	A	B	C	D	E	F	G	OVERALL LENGTH

Company		Drawn by	Drawing No.	Revision No.
Company Order No.	Contract No.	Date		



Standard Order Sheet

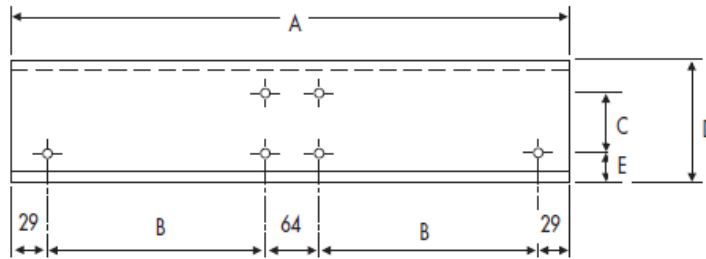
Zed Sleeves

(For Heavy End Bay Sleeves, see page 8)



ASL Ref:

www.albionsections.co.uk
sales@albionsections.co.uk



Section Ref	Section Depth	A mm	B mm	C mm	D mm	E mm
125	120	422	150	60	120	33
146	145	422	150	65	145	43
176	175	632	255	95	175	43
207	200	632	255	115	200	45.5
227	225	632	255	115	225	58
247	240	732	305	150	240	48
267	265	942	410	165	265	53
307	300	1044	461	200	300	53
341	345	1190	534	245	345	53
401	400	1400	639	300	400	53

SECTION	QUANTITY	MARK

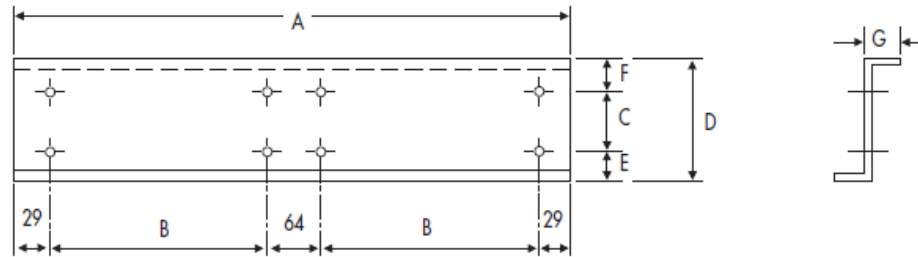
Company		Drawn by	Drawing No.	Revision No.	
Company Order No.	Contract No.	Date			

Standard Order Sheet Heavy End Bay System Sleeves



ASL Ref:

www.albionsections.co.uk
sales@albionsections.co.uk



END BAY SLEEVES

Section Ref	A mm	B mm	C mm	D mm	E mm	F mm	G mm
146	802	340	65	145	43	37	50
176	992	435	95	175	43	37	55
207	1172	525	115	200	45.5	39.5	66
227	1172	525	115	225	58	52	66
247	1312	595	150	240	48	42	59
267	1472	675	165	265	53	47	60
307	1632	755	200	300	53	47	60
341	1870	874	245	345	53	47	70
401	2200	1039	300	400	53	47	85

SECTION	QUANTITY	MARK

INNER BAY SLEEVES

Section Ref	A mm	B mm	C mm	D mm	E mm	F mm	G mm
146	630	254	65	145	43	37	50
176	734	306	95	175	43	37	55
207	902	390	115	200	45.5	39.5	66
227	902	390	115	225	58	52	66
247	980	429	150	240	48	42	59
267	1010	444	165	265	53	47	60
307	1200	539	200	300	53	47	60
341	1380	629	245	345	53	47	70
401	1600	739	300	400	53	47	85

SECTION	QUANTITY	MARK

Company		Drawn by	Drawing No.	Revision No.
Company Order No.	Contract No.	Date		

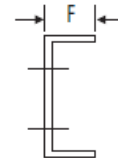
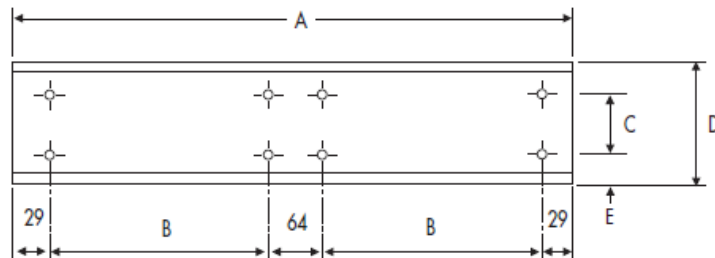
Standard Order Sheet

Standard Sleeves: Channels



ASL Ref:

www.albionsections.co.uk
sales@albionsections.co.uk



Section Ref	Section Depth	A mm	B mm	C mm	D mm	E mm	F mm
125	120	422	150	60	125	32.5	40
146	145	630	254	65	150	42.5	47
176	175	734	306	95	180	42.5	60
207	200	734	306	115	205	45	63
227	225	902	390	115	230	57.5	63
247	240	980	429	150	245	47.5	63
267	265	1084	481	165	270	52.5	67
307	300	1084	481	200	305	52.5	70
341	345	1202	540	245	350	52.5	73
401	400	1522	700	300	405	52.5	85

SECTION	QUANTITY	MARK

Company		Drawn by	Drawing No.	Revision No.
Company Order No.	Contract No.	Date		

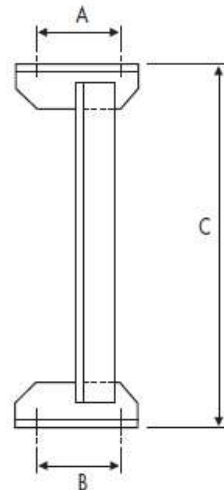
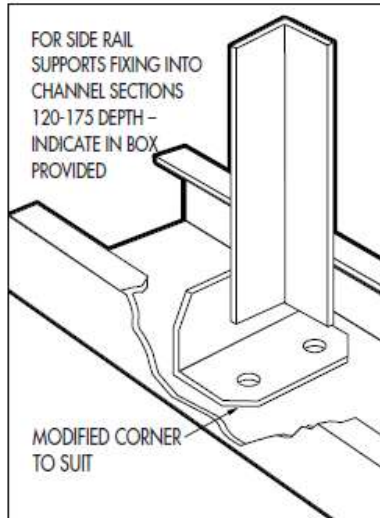
Standard Order Sheet

Side Rail Supports & Diagonal Tie Wires

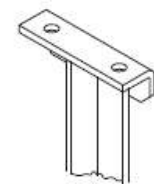


ASL Ref:

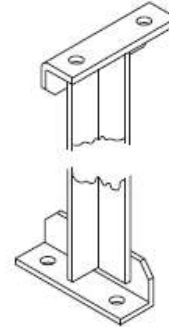
www.albionsections.co.uk
sales@albionsections.co.uk



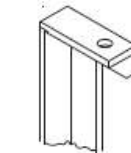
ALTERNATIVE END CLEAT TYPES



STANDARD CLEAT

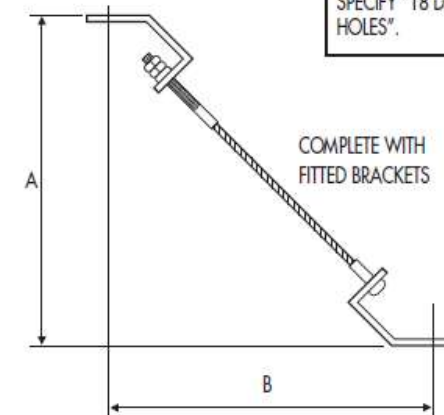


END CLEAT TURNED THROUGH 90°. GENERALLY USED WHEN FIXING SIDE RAIL SUPPORTS BETWEEN SIDE RAIL AND EAVES BEAM. TOP CLEAT IS FIXED AT 90° TO BOTTOM CLEAT



HALF CLEAT

DIAGONAL TIE WIRES



NOTE:
WHEN STRUTS ARE USED WITH COUNTERSUNK HOLES IN C SECTIONS SPECIFY "18 DIAMETER HOLES".

QUANTITY	A	B	C	HOLE DIA.	MARK	CHANNELS 120-175

CUSTOMER TO INDICATE WHEN ALTERNATIVE END CLEAT REQUIRED

NOTE:
WHEN SIDE RAIL SUPPORTS ARE USED IN CONJUNCTION WITH DIAGONAL TIE WIRES AT A MID POINT LOCATION (SEE TECHNICAL MANUAL PAGE 22) THE ACTUAL OVERALL LENGTH WILL BE RAIL CENTRES LESS 7mm. FOR SIDE RAIL SUPPORTS USED AT INTERMEDIATE AND THIRD POINT LOCATION (SEE TECHNICAL MANUAL PAGE 23) THE ACTUAL OVERALL LENGTH WILL BE RAIL CENTRES LESS THICKNESS OF RAIL.

QUANTITY	A	B	MARK

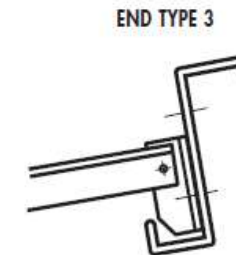
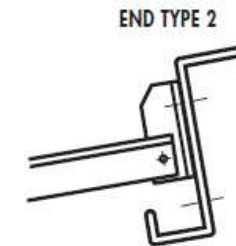
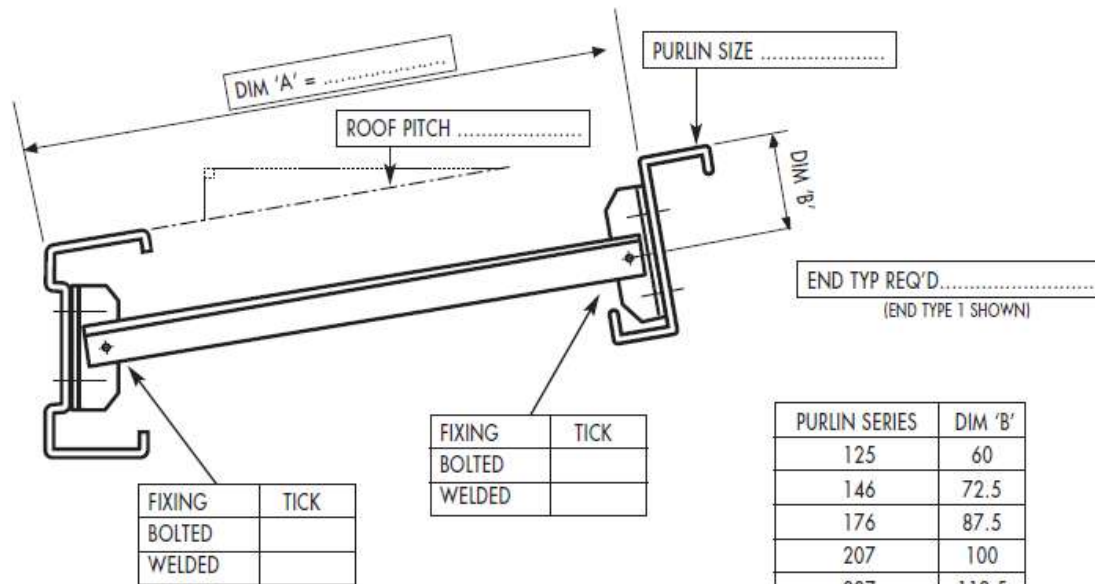
Company		Drawn by	Drawing No.	Revision No.
Company Order No.	Contract No.	Date		

Standard Order Sheet Eaves Struts



ASL Ref:

www.albionsections.co.uk
sales@albionsections.co.uk



NOTE: End cleats supplied welded as standard may be bolted if required

If you have any queries with this drawings contents please contact:

Company		Drawn by	Drawing No.	Revision No.	
Company Order No.	Contract No.	Date			

Standard Order Sheet Standard Cleats

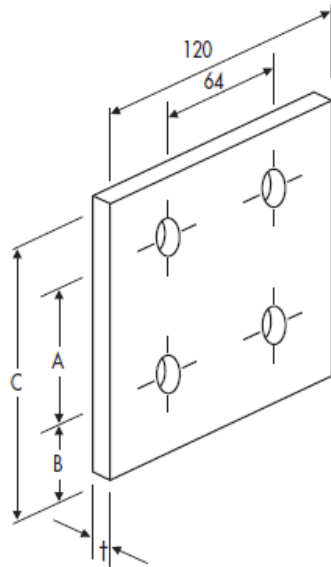


ASL Ref:

www.albionsections.co.uk
sales@albionsections.co.uk

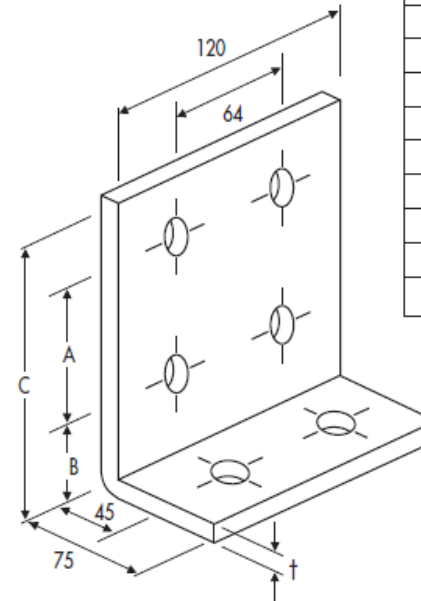
WELD ON CLEATS

BOLT ON CLEATS



SECTION REF C & Zed	A	B	C	t
125	60	40	125	6
146	65	50	140	6
176	95	50	170	6
207	115	52.5	192	6
227	115	65	205	6

MARK No	SECTION	No REQD



SECTION REF C & Zed	A	B	C	t
125	60	40	125	6
146	65	50	140	6
176	95	50	170	6
207	115	52.5	192	6
227	115	65	205	6
247	150	55	230	8
267	165	60	250	10
307	200	60	285	10
341	245	60	330	10
401	300	60	385	10

MARK No	SECTION	No REQD

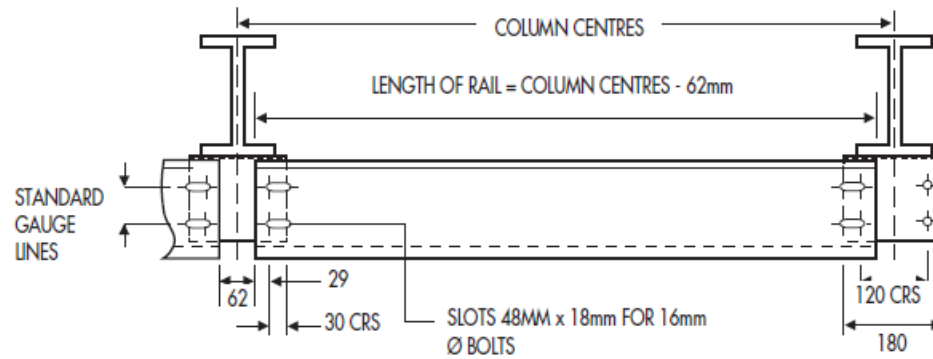
GENERAL NOTES: ALL HOLES 18mm FOR 16mm BOLTS. MATERIAL - MILD STEEL. FINISH - NATURAL.

Company		Drawn by	Drawing No.	Revision No.	
Company Order No.	Contract No.	Date			

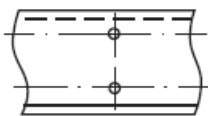
Standard Information Sheet Fire Restraint Side Rail



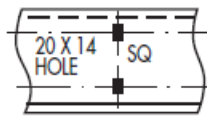
www.albionsections.co.uk
sales@albionsections.co.uk



STANDARD PIERCING OPTIONS ALL BELOW DIMENSIONS TO C/L HOLE



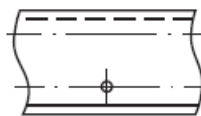
DOUBLE HOLE



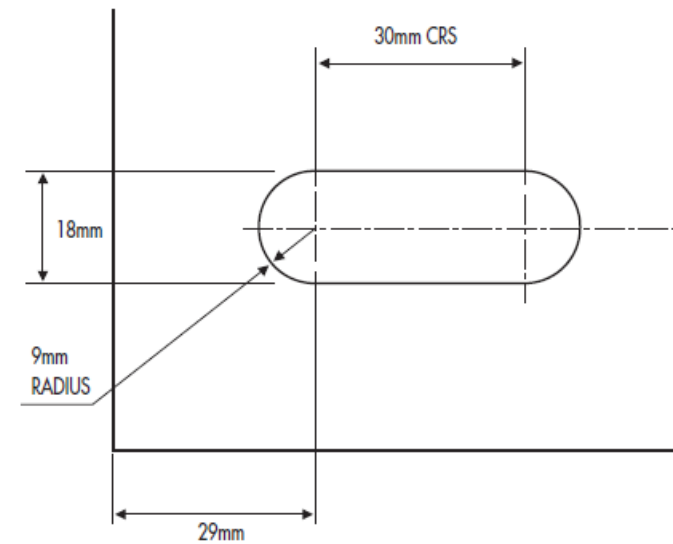
20 X 14 HOLE
SAG BAR & RAIL SUPPORT HOLES



14 DIA FLANGE HOLE BOTTOM
FLANGE ONLY
33 BMK



SINGLE HOLE



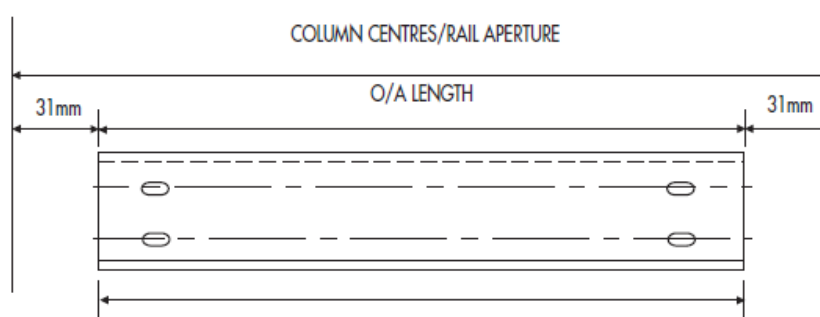
Standard Order Sheet Fire Restraint Side Rail



ASL Ref:

www.albionsections.co.uk
sales@albionsections.co.uk

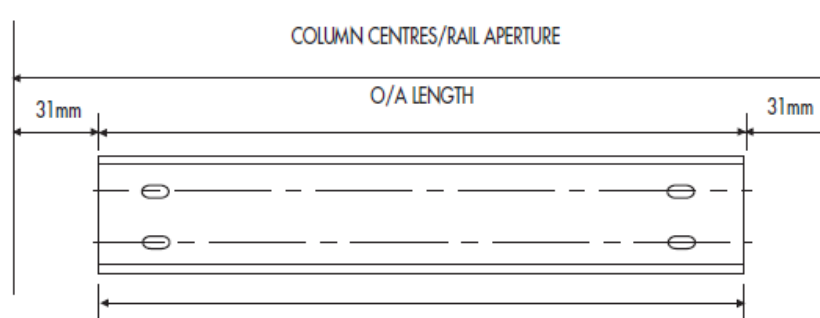
Z SECTION



NO.	AS DRAWN	MARK
NO.	OPPOSITE HAND	MARK

SECTION NUMBER REFERENCE

C SECTION



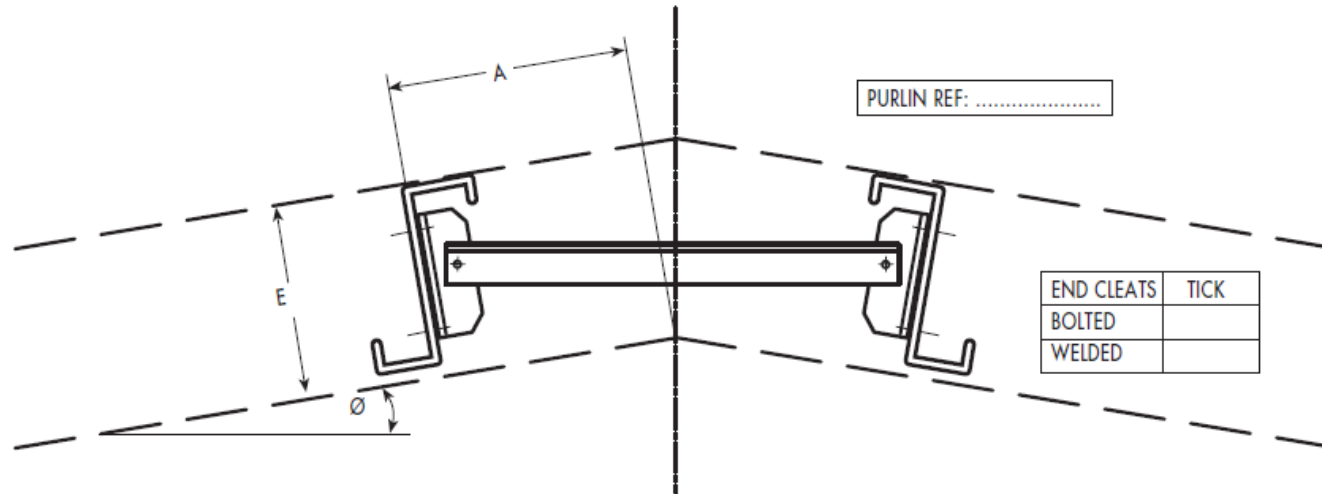
Company		Drawn by	Drawing No.	Revision No.	
Company Order No.	Contract No.	Date			

Standard Order Sheet
Apex Strut Angle Type



ASL Ref:

www.albionsections.co.uk
 sales@albionsections.co.uk



Quantity	Mk	A	E	Ø

Company		Drawn by	Drawing No.	Revision No.
Company Order No.	Contract No.	Date		

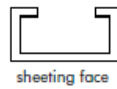
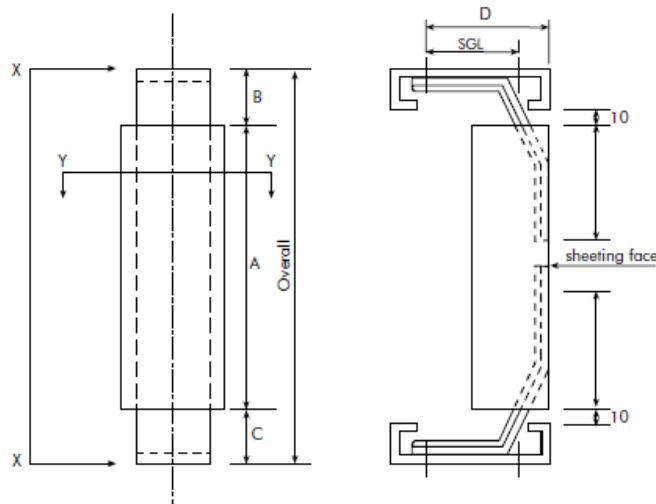


Standard Order Sheet

Channel Joint Rail



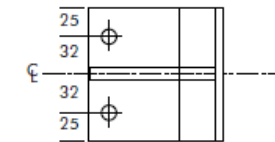
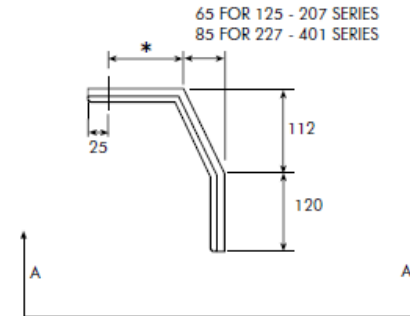
www.albionsections.co.uk
sales@albionsections.co.uk



sheeting face

view on YY

View on arrow 'XX' is an example of CJR fixed between rails. For other applications refer to zed fixings shown in technical manual.



view on AA

Material: 3mm galvanised
Holes: 18mm diameter

Overall	Qty	Mk	A	B	C	D	Gauge

Quantity	Mk	*

Company

Drawn by

Drawing No.

Revision No.

Company Order No.

Contract No.

Date

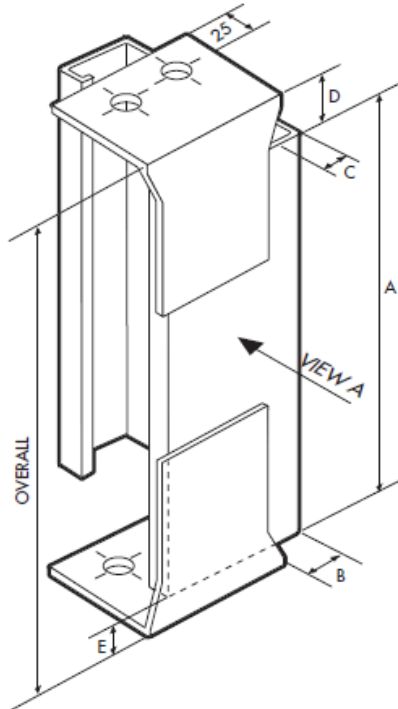


Standard Order Sheet Cladding Joint Rail

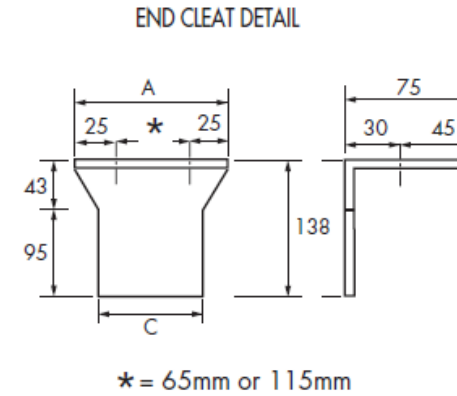
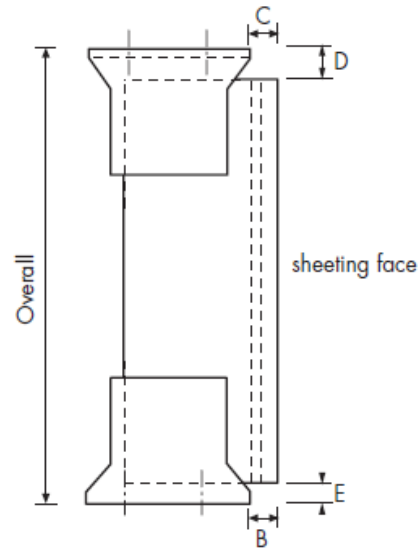


ASL Ref:

www.albionsections.co.uk
sales@albionsections.co.uk



View on arrow A is an example of CJR fixed between rails. For other applications refer to zed fixings shown in technical manual.



Note: Standard gauge for CJR section 1.6mm or 2.0mm

Overall	Qty	Mk	A	B	C	D	Gauge 1.6 or 2.0

Company		Drawn by	Drawing No.	Revision No.
Company Order No.	Contract No.	Date		

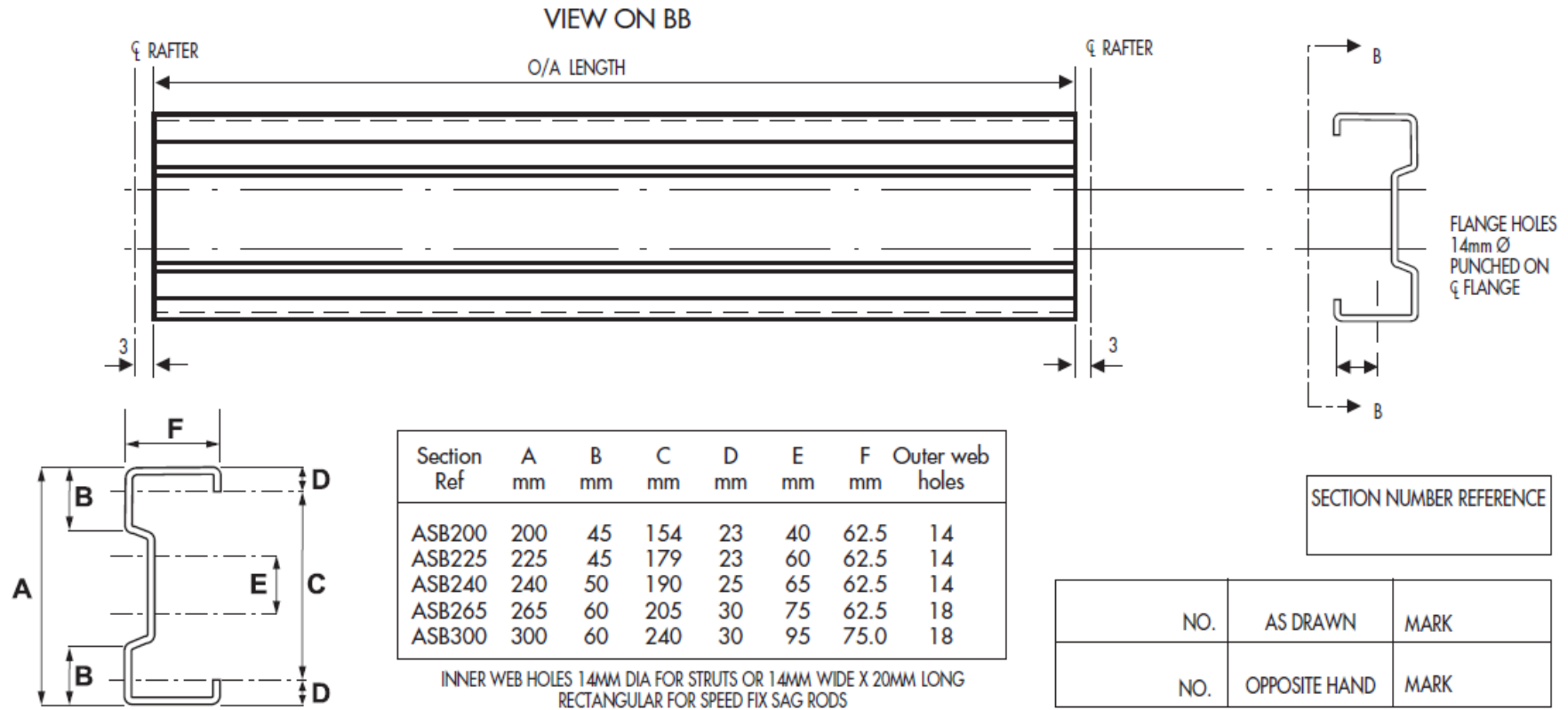
Standard Order Sheet

Sigma Purlin



ASL Ref:

www.albionsections.co.uk
sales@albionsections.co.uk



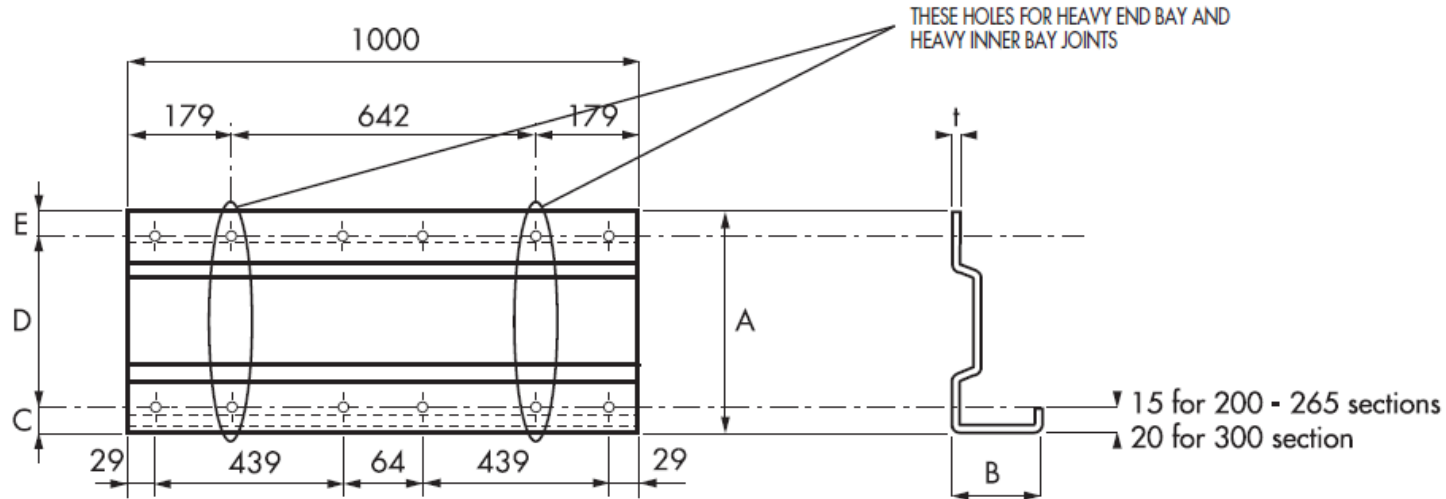
Company	Drawn by	Drawing No.	Revision No.
Company Order No.	Contract No.	Date	

Standard Order Sheet

Sigma Purlin Sleeves



www.albionsections.co.uk
sales@albionsections.co.uk



VIEW ON AA

Section Ref	A mm	B mm	C mm	D mm	E mm	Hole dia
ASB200	203	80	29	154	20	14
ASB225	228	80	29	179	20	14
ASB240	243	80	31	190	22	14
ASB265	266	80	36	205	25	18
ASB300	301	95	36	240	25	18

Sleeve gauge t

Purlin gauge	Sleeve gauge
up to 1.8 mm	2.0 mm
over 1.8mm up to 2.3mm	2.5 mm
over 2.3mm up to 3.0mm	3.0 mm

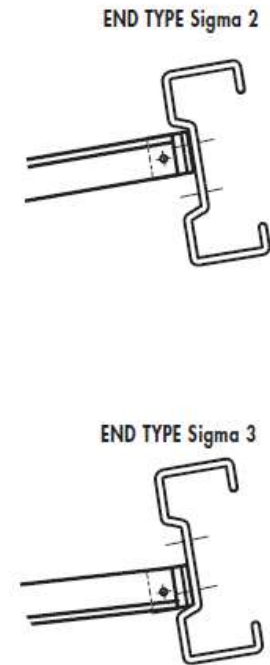
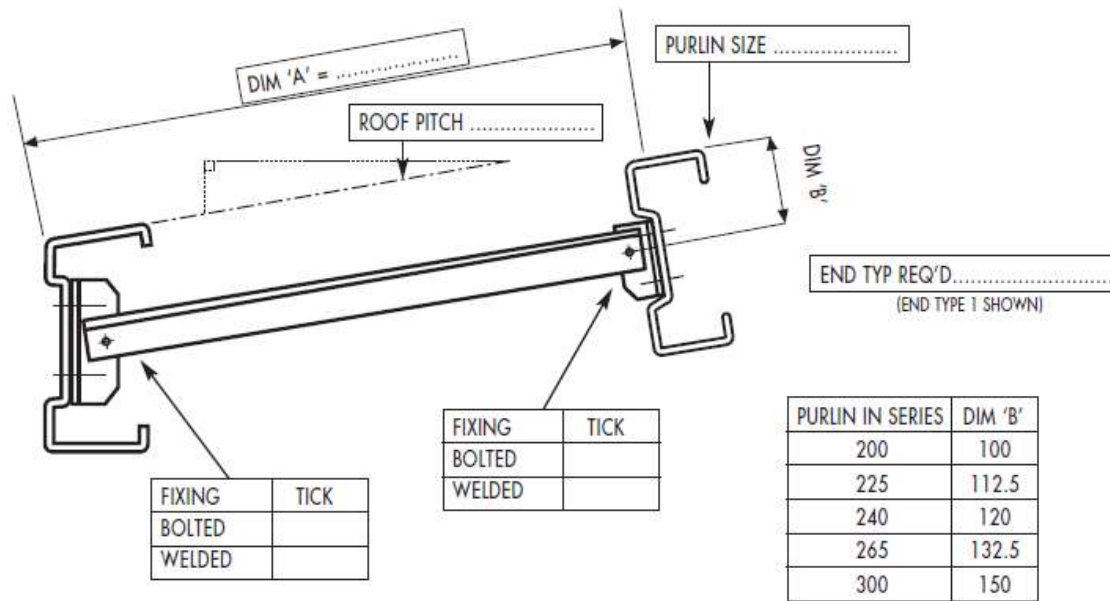
NOTE - For Heavy End Bay systems use the thickness purlin to determine sleeve thickness

SECTION	QUANTITY	GAUGE	MARK

Company		Drawn by	Drawing No.	Revision No.
Company Order No.	Contract No.	Date		

Standard Order Sheet Eaves Struts to Sigma Purlins

www.albionsections.co.uk
sales@albionsections.co.uk



NOTE: End cleats supplied welded as standard may be bolted if required

Company		Drawn by	Drawing No.	Revision No.
Company Order No.	Contract No.	Date		



Standard Order Sheet Standard Cleats for Sigma Purlin

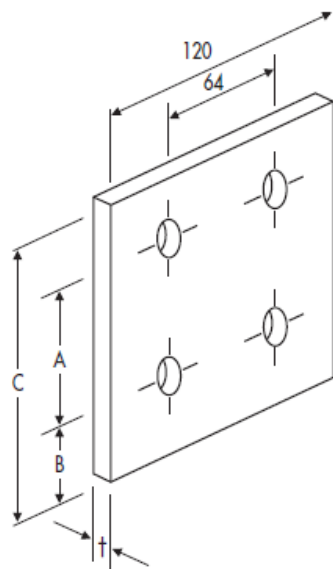


ASL Ref:

www.albionsections.co.uk
sales@albionsections.co.uk

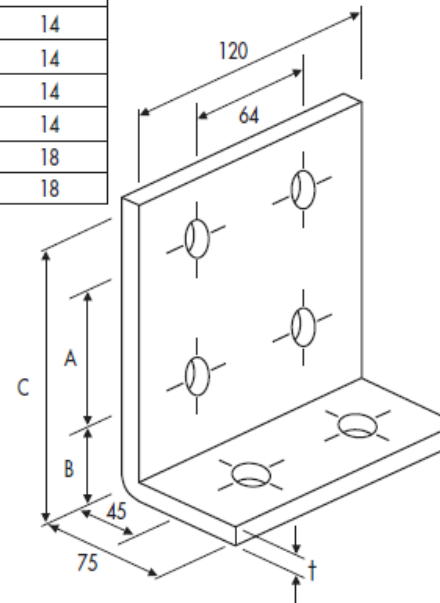
WELD ON CLEATS

BOLT ON CLEATS



Purlin Series	A	B	C	Thickness	Hole dia
All 200	154	35	209	6	14
22512-22516	179	35	234	6	14
22518-22525	179	35	234	8	14
24015-24018	190	37	247	8	14
24020-24028	190	37	247	10	14
All 265	205	42	272	10	18
All 300	240	42	307	10	18

MARK No	SECTION	No REQD



MARK No	SECTION	No REQD

GENERAL NOTES: MATERIAL - MILD STEEL. FINISH - NATURAL.

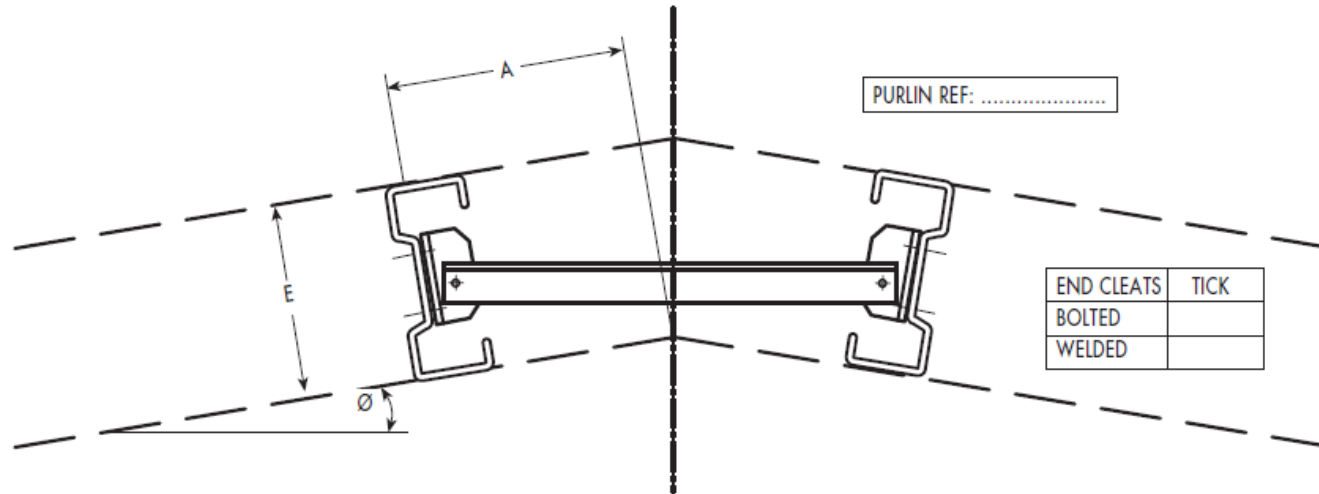
Company		Drawn by	Drawing No.	Revision No.
Company Order No.	Contract No.	Date		

Standard Order Sheet
**Apex Strut Angle Type for
 Sigma Purlins**



ASL Ref:

www.albionsections.co.uk
 sales@albionsections.co.uk



Quantity	Mk	A	E	Ø

Company		Drawn by	Drawing No.	Revision No.
Company Order No.	Contract No.	Date		

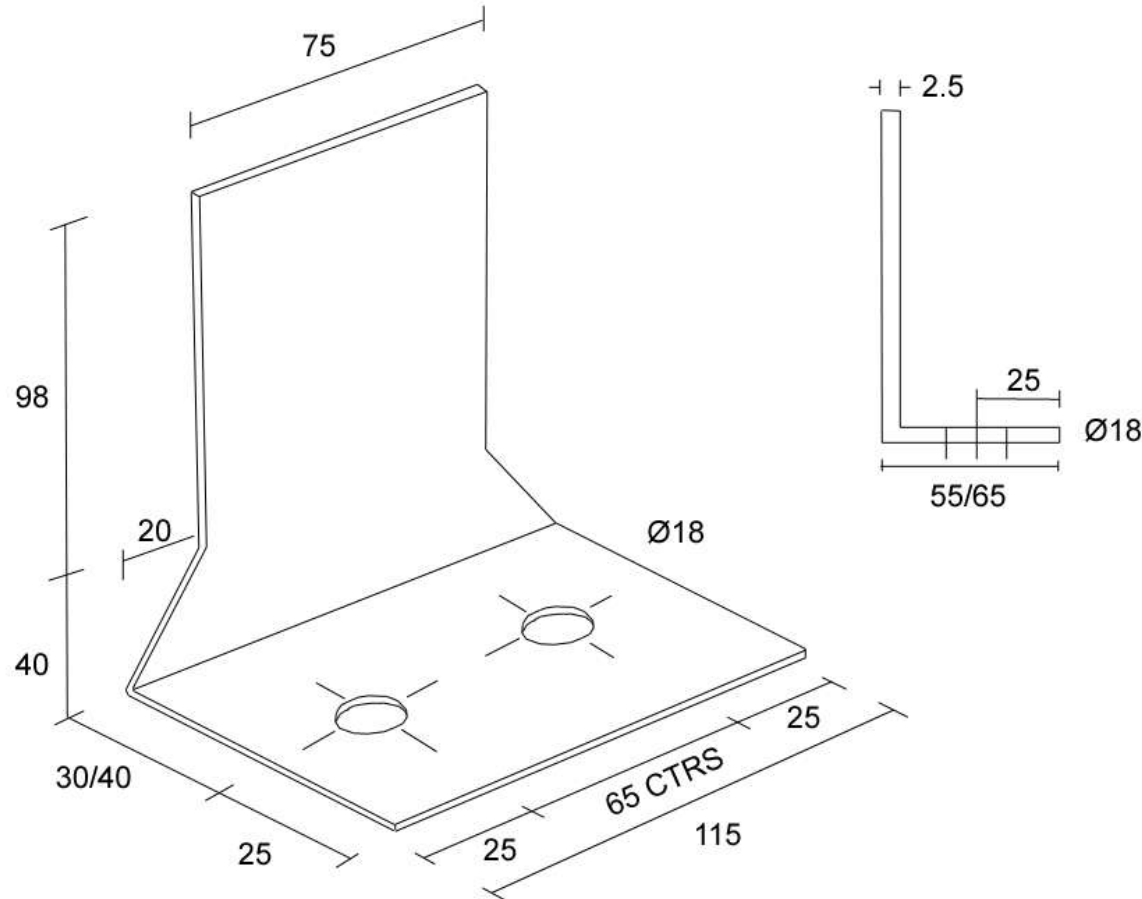


ASL Ref:



Standard Order Sheet 65mm Centres SWC Cleats

www.albionsections.co.uk
sales@albionsections.co.uk




188 x 115 x 3.0
198 x 115 x 3.0

Cleats

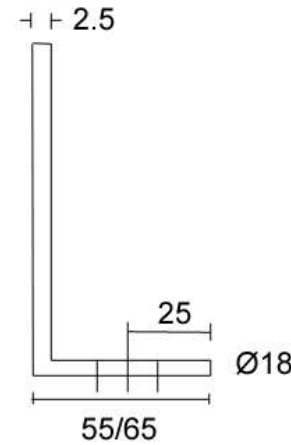
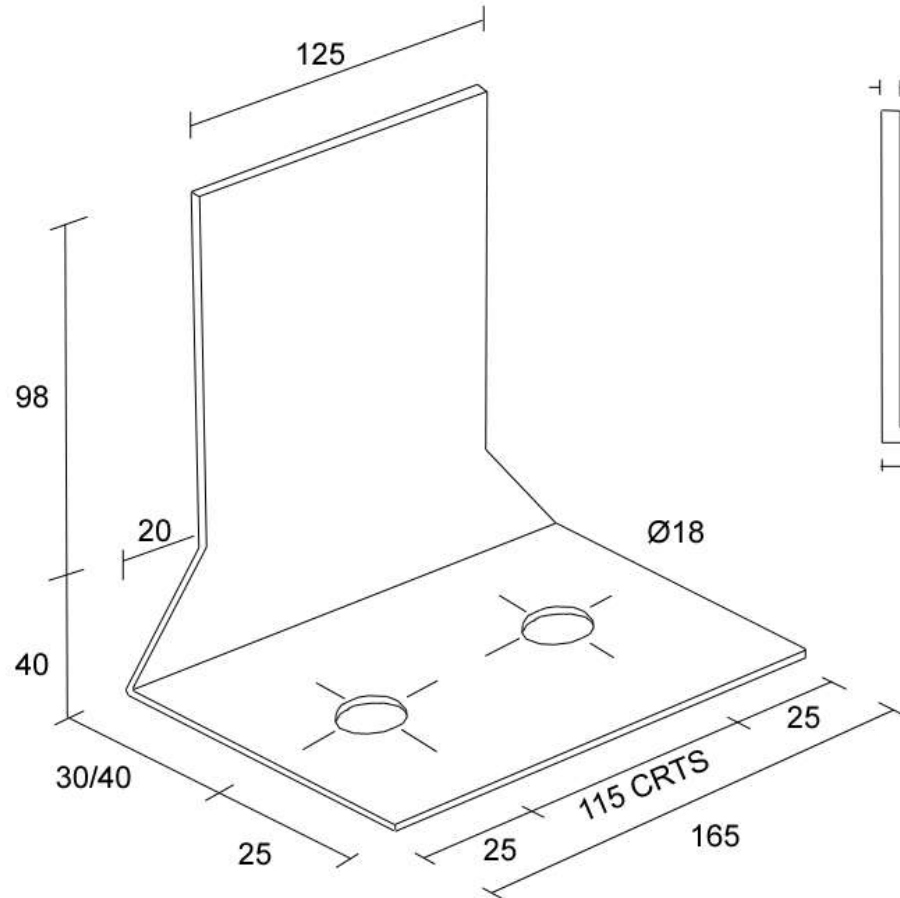
SWC 65 / 30
SWC 65 / 40

Order: _____
 Customer: _____
 Quantity: _____
 Pages: _____
 Delivery: _____

Company		Drawn by	Drawing No.	Revision No.	
Company Order No.	Contract No.	Date			

Standard Order Sheet
115mm Centres SWC Cleats

www.albionsections.co.uk
 sales@albionsections.co.uk



188 x 165 x 3.0
 198 x 165 x 3.0

Cleats

SWC 115 / 30
 SWC 115 / 40

Order: _____
 Customer: _____
 Quantity: _____
 Pages: _____
 Delivery: _____

Company		Drawn by	Drawing No.	Revision No.	
Company Order No.	Contract No.	Date			

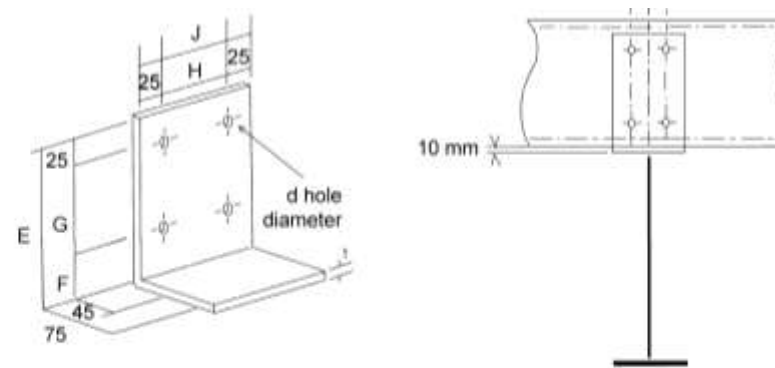
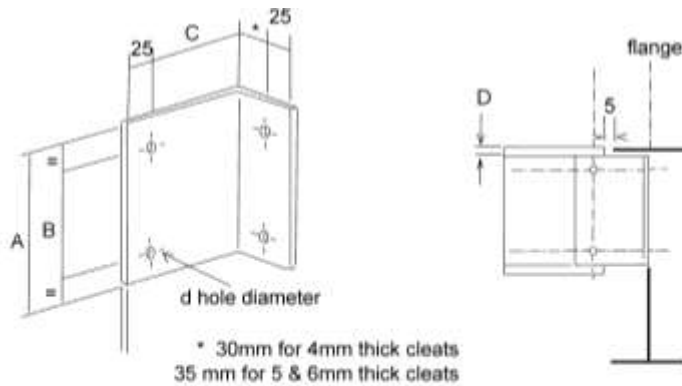
Standard Order Sheet

Inset Cleat Details



ASL Ref:

www.albionsections.co.uk
sales@albionsections.co.uk



Section Ref	Cleat Ref	A mm	B mm	C mm	D mm	t mm	d mm
146	MC14080	105	65	80	20	4	14
	MC14100	105	65	100	20	4	14
176	MC17080	135	95	80	20	4	14
	MC17115	135	95	115	20	4	14
207	MC20080	155	115	80	22	4	14
	MC20115	155	115	115	22	4	14
	MC20130	155	115	130	22	4	14
227	MC22080	155	115	80	35	4	14
	MC22115	155	115	115	35	4	14
	MC22130	155	115	130	35	4	14
247	MC24115	190	150	115	25	5	14
	MC24130	190	150	130	25	5	14
267	MC26115	215	165	115	25	5	18
	MC26130	215	165	130	25	5	18
307	MC30115	250	200	115	25	6	18
	MC30130	250	200	130	25	6	18
341	MC34130	295	245	130	25	6	18
401	MC40130	350	300	130	25	6	18

Section Ref	Cleat Ref	E mm	F mm	G mm	H mm	J mm	t mm	d mm
146	OC146	140	50	65	56	106	6	14
176	OC176	170	50	95	56	106	6	14
207	OC207	192	52.5	115	56	106	6	14
227	OC227	205	65	115	56	106	6	14
247	OC247	230	55	150	56	106	8	14
267	OC267	250	60	165	56	106	10	18

Company

Drawn by

Drawing No.

Revision No.

Company Order No.

Contract No.

Date

